



Second Floor Office

8214, 11500 35 Street SE | Calgary, AB

PROPERTY HIGHLIGHTS

- » **1,721 sq. ft.** of second floor Office available for lease
- » 2 large offices + large open work area
- » Utilities included in the operating cost
- » 4 assigned parking stalls and on street parking available
- » Ideally located with easy access to Deerfoot Trail, Barlow Trail and Stoney Trail
- » Developed, owned and managed by Telsec Property Corporation

SPACE DETAILS

AVAILABLE AREA	1,721 Sq.Ft.
NET MONTHLY RENT	\$2,500
OP COST & PROPERTY TAX	\$10.15 per sq. ft. (2025)
LEASE TERM	5 year
PARKING	4 assigned (street parking available)
ZONING	I-G Industrial General



FOR LEASE | 8214, 11500 35 STREET SE



SHEPARD CENTRE & SOUTH TRAIL CROSSING

Food, Drinks & Market

1. Bento Sushi
2. Costa Vida
3. The Burger's Priest
4. Karma Fine Indian Cuisine
5. Montana's
6. Lina's, Italian Supermercato
7. Five Guys
8. Toad 'n' Turtle Pubhouse & Grill
9. South St. Burger
10. Boston Pizza
11. Calavera Cantina
12. Kiro Sushi

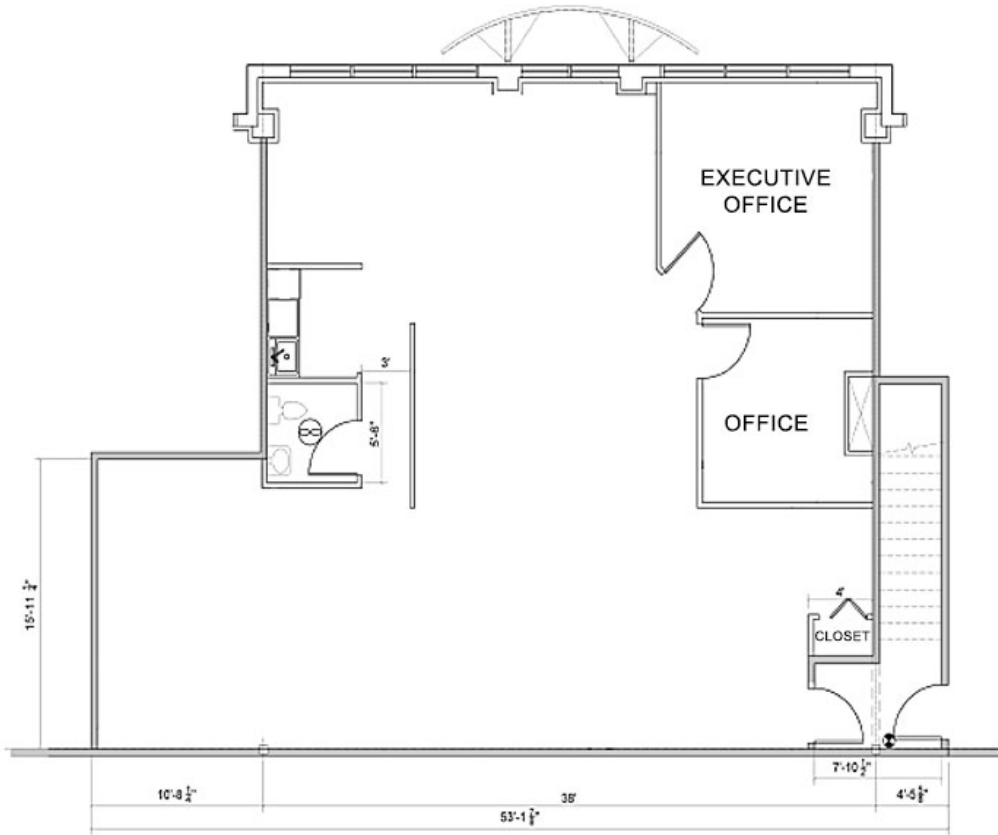
Lifestyle & Recreation

1. GoodLife Fitness Calgary
2. Club Pilates
3. Soul Hot Yoga Inc
4. Ultimate Dance Company
5. Massage Heights Shepard Regional
6. Deerfoot Inn & Casino

Shopping

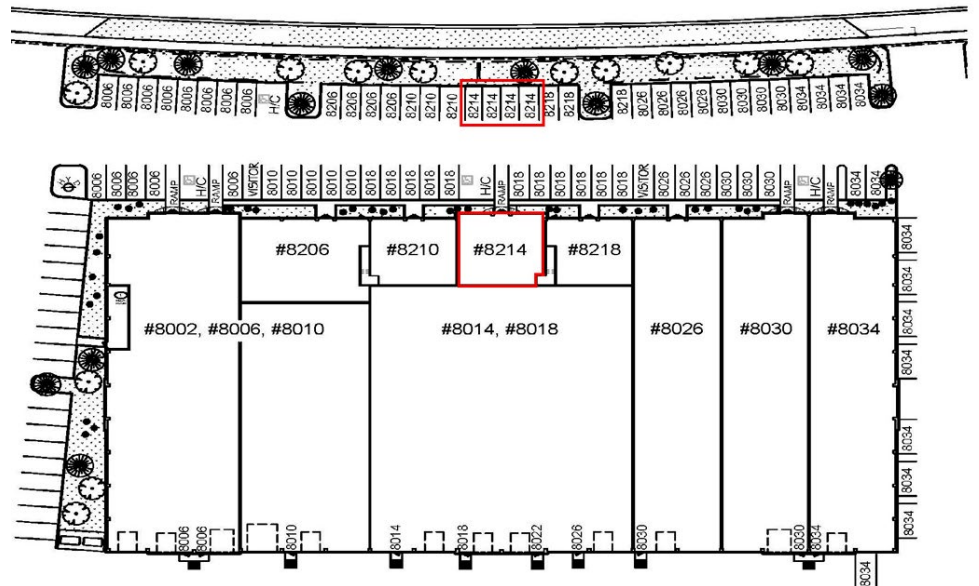
1. London Drugs
2. Staples
3. Sport Chek
4. Crystal Glass Canada Ltd
5. Sherwin-Williams Paint Store
6. Marshalls
7. HomeSense
8. PetSmart
9. Mastermind Toys
10. Petland South Trail
11. The Brick Mattress Store
12. Structube
13. Mark's

UNIT 8214 FLOOR PLAN



SITE PLAN

35 Street SE



FOR LEASE | 8214, 11500 35 STREET SE



Kaile Landry

Associate

klandry@naiadvent.com

(403) 669-3050

Jennifer Myles

Associate

jmyles@naiadvent.com

(403) 975-2616

Brody Butchart

Senior Associate

bbutchart@naiadvent.com

(403) 389 7857

Jamie Coulter, SIOR

Vice President/Partner

jcoulter@naiadvent.com

(403) 835 1535

3633 8 Street SE
Calgary, AB T2G 3A5

+1 403 984 9800

naiadvent.com