

Warehouse Space
A2, 9805 Horton Road SW - 2,184 SF

PROPERTY HIGHLIGHTS

- » Ideally located with easy access to Southland Drive and Macleod Trail
- » Across the street from various restaurants and retail amenities as part of Southland Crossing shopping centre
- » Within walking distance to Southland CTrain Station
- » 24' clear ceiling height in warehouse
- » Water and gas included in the operating cost
- » 70 amp panel; 208/120v 3 phase
- » 12' x 12' overhead drive in door
- » Developed, owned and managed by Telsec Property Corporation

SPACE DETAILS

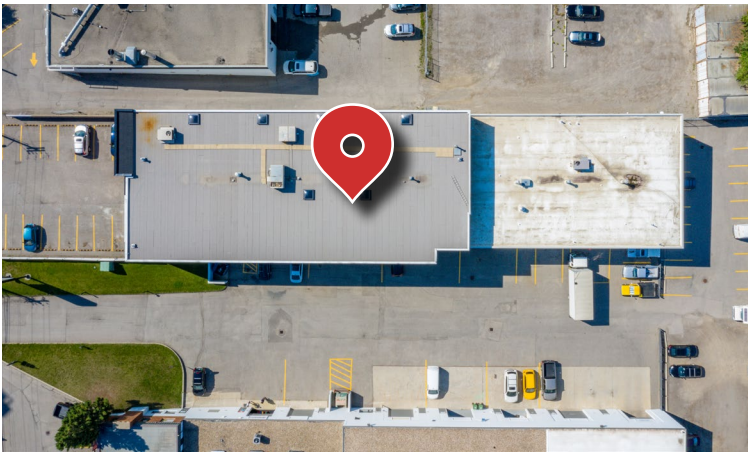
AVAILABLE AREA	2,184 SF
NET MONTHLY RENT	\$2,950.00
OP COST & PROPERTY TAX	\$8.38 PSF (2025)
LEASE TERM	5 Years
ZONING	I-G
CEILING HEIGHT	24' in warehouse
POWER	208/120V, 3phase, 70 amp
LOADING DOOR	12' x 12' drive in
AVAILABLE	May 1, 2025

THIS BROCHURE IS INTENDED FOR INFORMATION PURPOSES ONLY AND SHOULD NOT BE RELIED UPON FOR ACCURATE FACTUAL INFORMATION BY THE RECIPIENTS HEREOF. THE INFORMATION CONTAINED HEREIN IS BASED ON INFORMATION WHICH NAI ADVENT DEEMS RELIABLE. HOWEVER, NAI ADVENT ASSUMES NO RESPONSIBILITY FOR THE DEGREE OF ACCURACY OF SUCH INFORMATION, NOR DOES NAI ADVENT REPRESENT OR WARRANT THE INFORMATION CONTAINED HEREIN. RECIPIENTS HEREOF SHOULD CONDUCT THEIR OWN INVESTIGATIONS TO DETERMINE THE ACCURACY OF INFORMATION CONTAINED HEREIN. THE INFORMATION CONTAINED HEREIN IS SUBJECT TO CHANGE WITHOUT NOTICE.

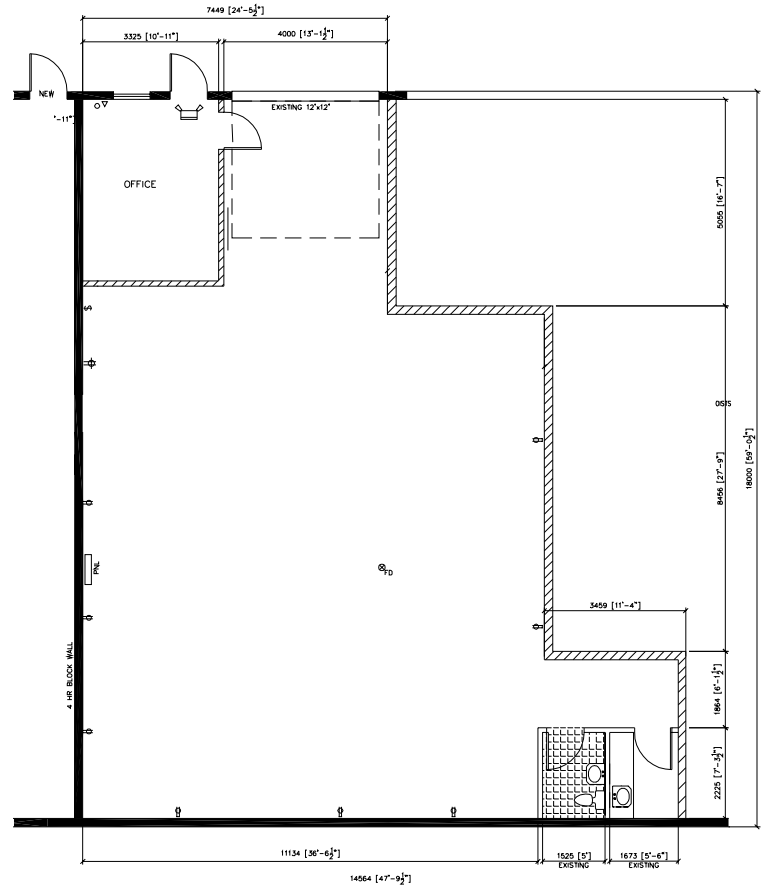
3633 8 Street SE
Calgary, AB T2G 3A5
+1 403 984 9800

naiadvent.com

FOR LEASE | A2, 9805 HORTON ROAD SW



FLOOR PLAN



SITE PLAN

9727
EXISTING BUILDING

LINE OF 2ND FLOOR OVERHANG

BAY E

BAY D

BAY C

BAY B2

BAY B

BAY A

ELEC

GAS

MULTI-TENANT STORAGE

FOR LEASE

Excellent Central Location

A2, 9805 Horton Road SW



Kaile Landry
Associate
klandry@naiadvent.com
(403) 669-3050

Jennifer Myles
Associate
jmyles@naiadvent.com
(403) 975-2616

Brody Butchart
Senior Associate
bbutchart@naiadvent.com
(403) 389 7857

Jamie Coulter, SIOR
Vice President/Partner
jcoulter@naiadvent.com
(403) 835 1535

