



Office / Warehouse

4, 12204 - 40 Street SE | Calgary, AB

PROPERTY HIGHLIGHTS

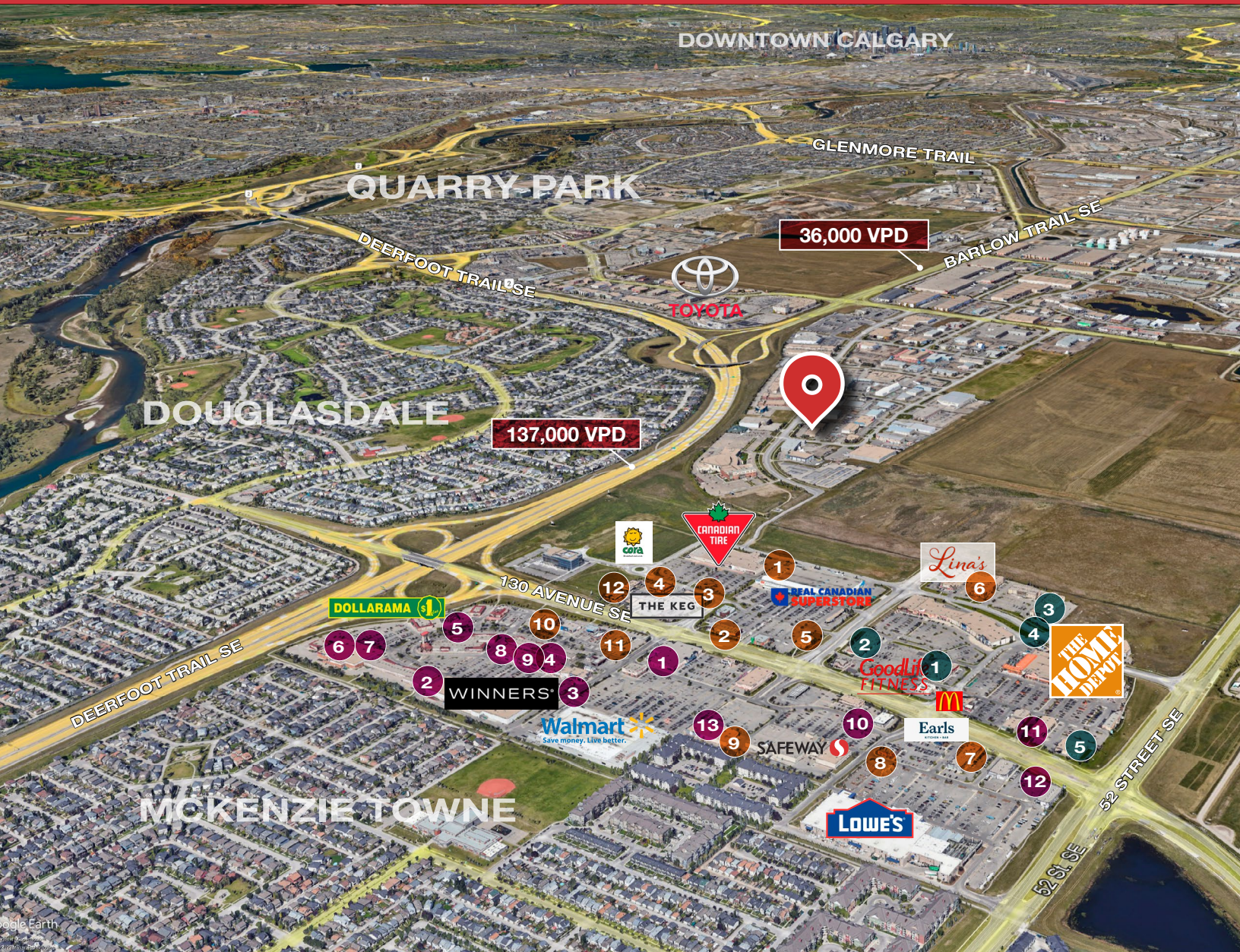
- » 1,592 SF dedicated Warehouse, with 1,285 SF of Showroom and Office
- » 15' clear ceiling height in Warehouse
- » 100 amp 208/120v 3 phase
- » 12' x 12' overhead drive in door and 70' loading depth
- » 6 assigned parking stalls and additional on street parking
- » Ideally located with easy access to Deerfoot Trail, Barlow Trail and Stoney Trail
- » Developed, owned and managed by Telsec Property Corporation

SPACE DETAILS

AVAILABLE AREA	2,877 SF
WAREHOUSE	1,592 SF
SHOWROOM / OFFICE	1,285 SF
NET MONTHLY RENT	\$4,315.00
OP COST & PROPERTY TAX	\$9.08 per sq. ft. (est for 2025)
LEASE TERM	5 years
ZONING	I-G Industrial General
CEILING HEIGHT	15' in warehouse (clear)
LOADING DOOR	1 Drive In - 12' x 12'
AVAILABLE	Immediately



FOR LEASE | 4, 12204 - 40 STREET SE



SHEPARD CENTRE & SOUTH TRAIL CROSSING

Food, Drinks & Market

1. Bento Sushi
2. Costa Vida
3. The Burger's Priest
4. Karma Fine Indian Cuisine
5. Montana's
6. Lina's, Italian Supermercato
7. Five Guys
8. Toad 'n' Turtle Pubhouse & Grill
9. South St. Burger
10. Boston Pizza
11. Calavera Cantina
12. Kiro Sushi

Lifestyle & Recreation

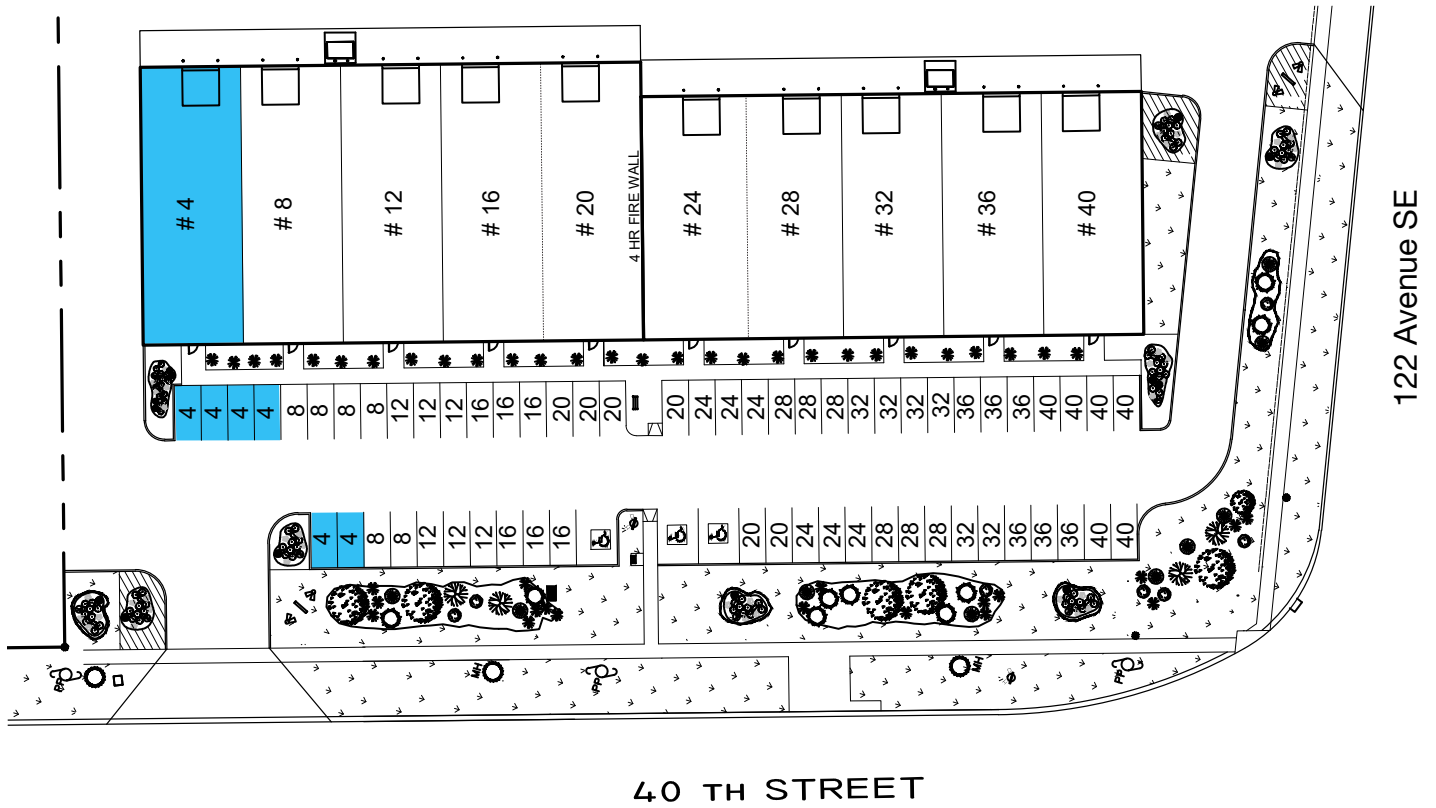
1. GoodLife Fitness Calgary
2. Club Pilates
3. Soul Hot Yoga Inc
4. Ultimate Dance Company
5. Massage Heights Shepard Regional

Shopping

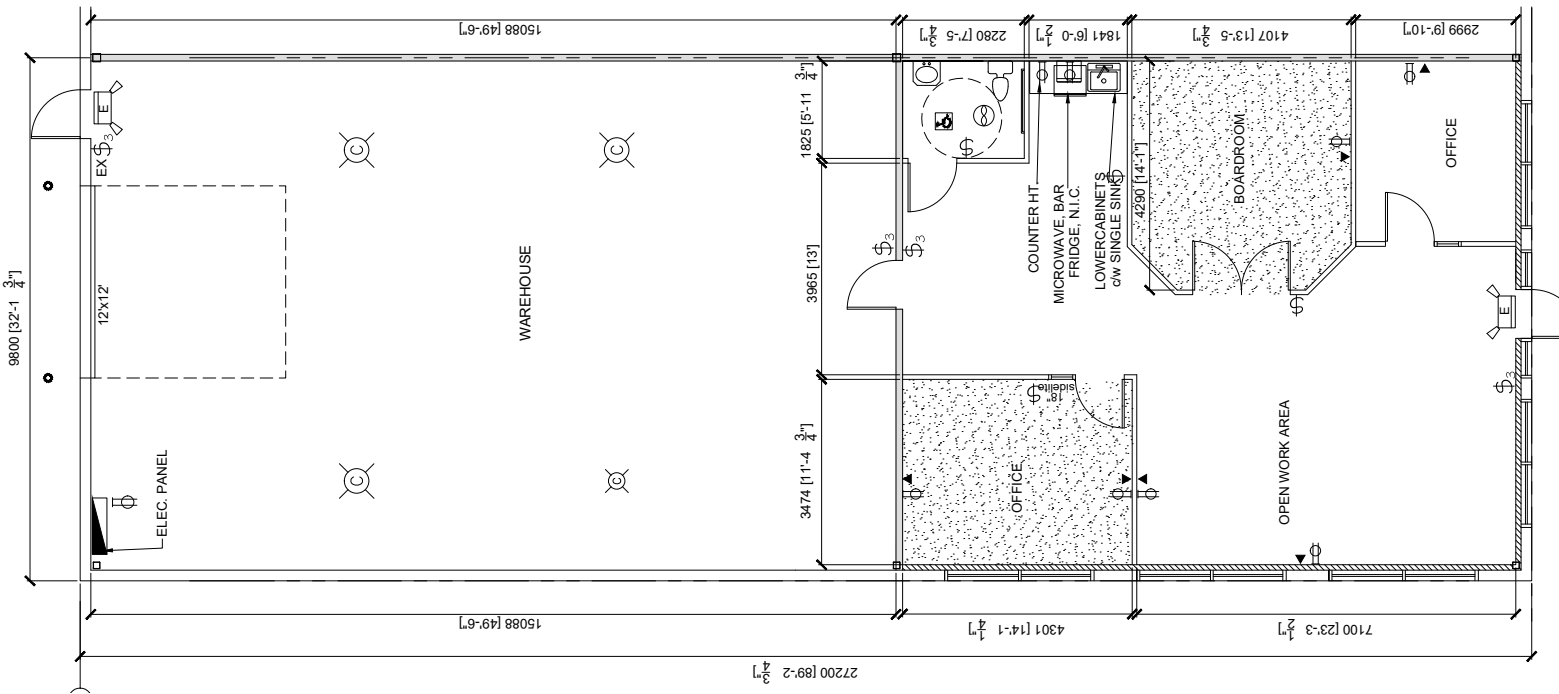
1. London Drugs
2. Staples
3. Sport Chek
4. Crystal Glass Canada Ltd
5. Sherwin-Williams Paint Store
6. Marshalls
7. HomeSense
8. PetSmart
9. Mastermind Toys
10. Petland South Trail
11. The Brick Mattress Store
12. Structube
13. Mark's

FOR LEASE | 4, 12204 - 40 STREET SE

SITE PLAN



FLOOR PLAN



FOR LEASE | 4, 12204 - 40 STREET SE



Kaile Landry

Associate

klandry@naiadvent.com

(403) 669-3050

Jennifer Myles

Associate

jmyles@naiadvent.com

(403) 975-2616

Brody Butchart

Senior Associate

bbutchart@naiadvent.com

(403) 389 7857

Jamie Coulter, SIOR

Vice President/Partner

jcoulter@naiadvent.com

(403) 835 1535

3633 8 Street SE
Calgary, AB T2G 3A5

+1 403 984 9800

naiadvent.com