



## Stoney Industrial / 10E

1919 84 Street NE | Calgary, Alberta

### PROPERTY OVERVIEW

- » Flexible lease configurations available from 1.00 to 3.80 Acres, with different size options to accommodate various tenant needs.
- » Prime Location on the corner of Highway 1 and Stoney Trail.
- » Land is compacted and graded with recycled asphalt.
- » Fully Fenced and Secured with lights, gate and security cameras throughout the property.
- » Located in an area of ongoing development, providing expanding opportunities for commerce and services.

### PROPERTY DETAILS

Size Available	1.0 - 3.8 Acres / 167,000 ± SF
Legal Description	Plan 0011441 Block 3
Lease Term	3 - 5 years
Lease Rate	\$4200 per acre per month + property tax
Zoning	I-G
Available	Immediately

**JAMIE COULTER**  
Vice President / Partner  
(403) 835-1535  
jcoulter@naiadvent.com

**BRODY BUTCHART**  
Senior Associate  
(403) 389 7857  
bbutchart@naiadvent.com

**KAILE LANDRY**  
Associate  
(403) 669-3050  
klandry@naiadvent.com

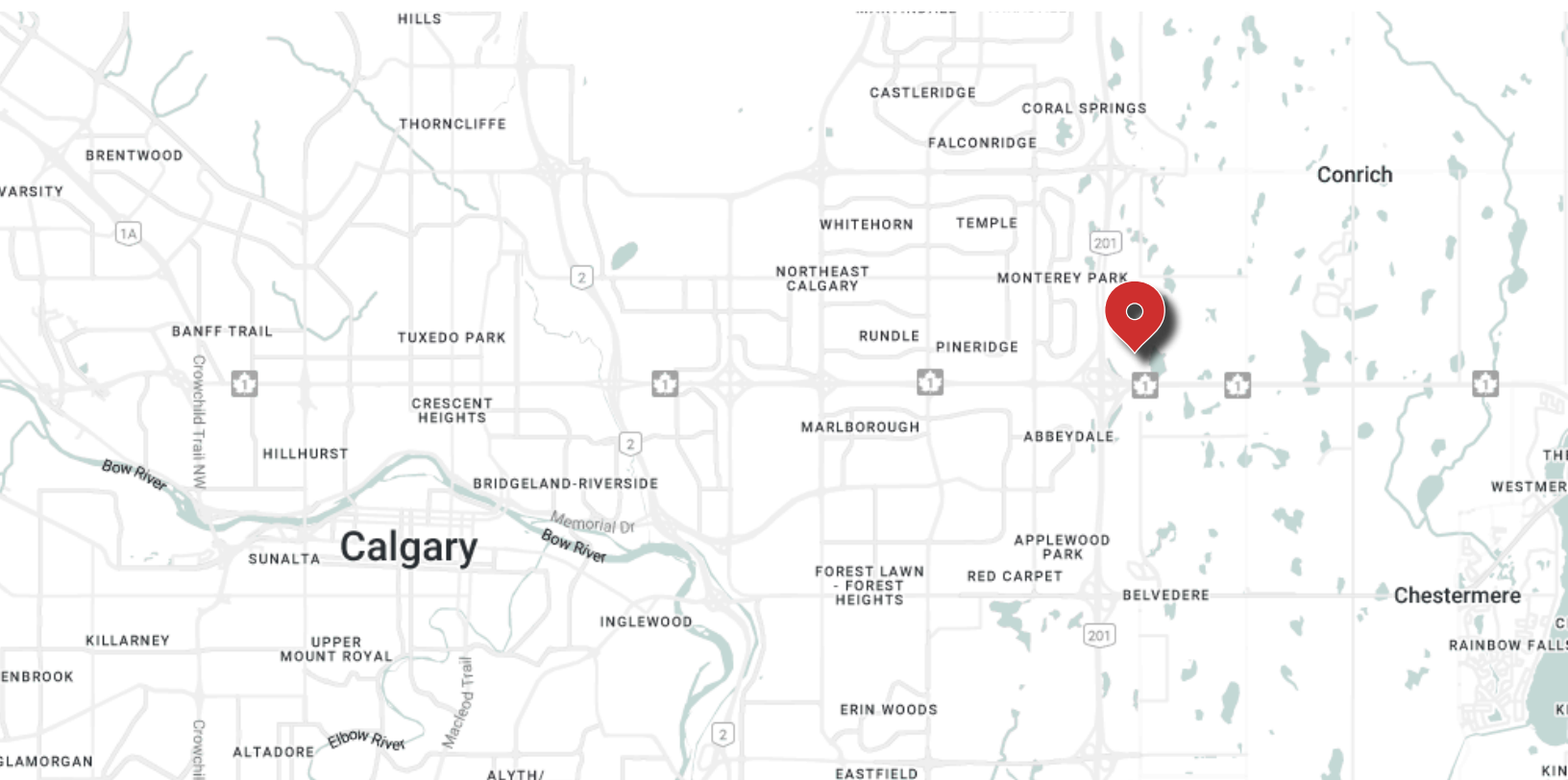
**JENNIFER MYLES**  
Associate  
(403) 975-2616  
jmyles@naiadvent.com

3633 8 STREET SE  
Calgary, AB T2G 3A5  
+1 403 984 9800  
**naiadvent.com**



# FOR LEASE

167,000 ± SF / 1.0 - 3.8 Acres  
Various lease options available  
**Industrial Land**



**JAMIE COULTER**  
Vice President / Partner  
(403) 835-1535  
jcoulter@naiadvent.com

**BRODY BUTCHART**  
Senior Associate  
(403) 389 7857  
bbutchart@naiadvent.com

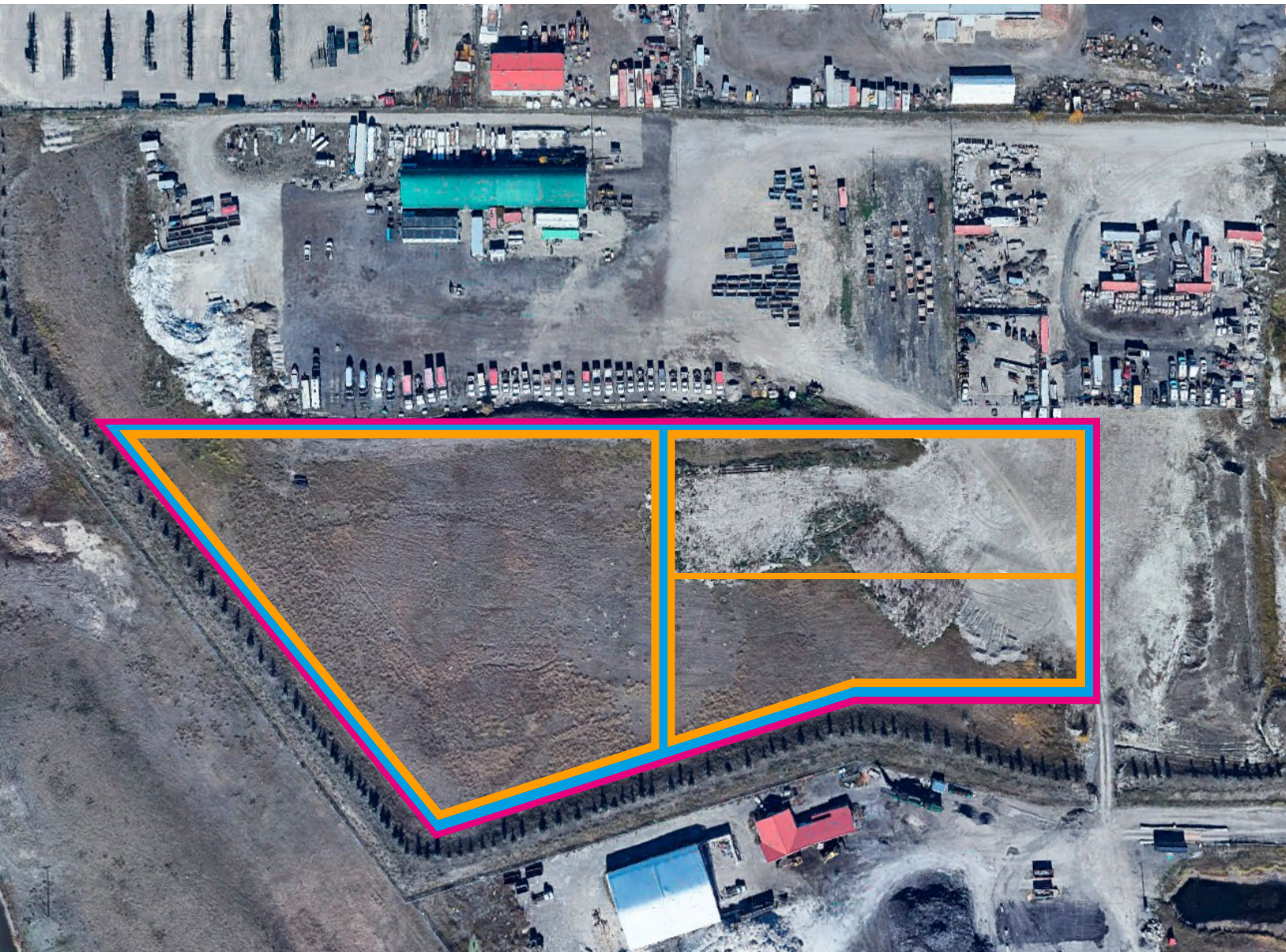
**KAILE LANDRY**  
Associate  
(403) 669-3050  
klandry@naiadvent.com

**JENNIFER MYLES**  
Associate  
(403) 975-2616  
jmyles@naiadvent.com

3633 8 STREET SE  
Calgary, AB T2G 3A5  
+1 403 984 9800  
[naiadvent.com](http://naiadvent.com)



## Lease Configurations



- Multiple lease options available, allowing tenants to select from different site sizes and configurations to suit their operational needs

**Option 1**  
3.8 Acres

**Option 2**  
1.8 Acres  
2.0 Acres

**Option 3**  
1.0 Acres  
1.0 Acres  
1.8 Acres

\*All lease sizes are currently an estimation

**JAMIE COULTER**  
Vice President / Partner  
(403) 835-1535  
jcoulter@naiadvent.com

**BRODY BUTCHART**  
Senior Associate  
(403) 389 7857  
bbutchart@naiadvent.com

**KAILE LANDRY**  
Associate  
(403) 669-3050  
klandry@naiadvent.com

**JENNIFER MYLES**  
Associate  
(403) 975-2616  
jmyles@naiadvent.com

3633 8 STREET SE  
Calgary, AB T2G 3A5  
+1 403 984 9800  
[naiadvent.com](http://naiadvent.com)



# FOR LEASE

167,000 ± SF / 1.0 - 3.8 Acres

Various lease options available

**Industrial Land**



**STONEY TRAIL NE**

## CONTACT US

### JAMIE COULTER

Vice President / Partner

(403) 835-1535

[jcoulter@naiadvent.com](mailto:jcoulter@naiadvent.com)

### BRODY BUTCHART

Senior Associate

(403) 389 7857

[bbutchart@naiadvent.com](mailto:bbutchart@naiadvent.com)

### KAILE LANDRY

Associate

(403) 669-3050

[klandry@naiadvent.com](mailto:klandry@naiadvent.com)

### JENNIFER MYLES

Associate

(403) 975-2616

[jmyles@naiadvent.com](mailto:jmyles@naiadvent.com)

THIS BROCHURE IS INTENDED FOR INFORMATION PURPOSES ONLY AND SHOULD NOT BE RELIED UPON FOR ACCURATE FACTUAL INFORMATION BY THE RECIPIENTS HEREOF. THE INFORMATION CONTAINED HEREIN IS BASED ON INFORMATION WHICH NAI ADVENT DEEMS RELIABLE, HOWEVER, NAI ADVENT ASSUMES NO RESPONSIBILITY FOR THE DEGREE OF ACCURACY OF SUCH INFORMATION, NOR DOES NAI ADVENT REPRESENT OR WARRANT THE INFORMATION CONTAINED HEREIN. RECIPIENTS HEREOF SHOULD CONDUCT THEIR OWN INVESTIGATIONS TO DETERMINE THE ACCURACY OF INFORMATION CONTAINED HEREIN. THE INFORMATION CONTAINED HEREIN IS SUBJECT TO CHANGE WITHOUT NOTICE.

3633 8 STREET SE  
Calgary, AB T2G 3A5  
+1 403 984 9800  
[naiadvent.com](http://naiadvent.com)